

Concerto in E major

for violin and strings (Solo Violin)

Johann Sebastian Bach (1685-1750)

Allegro

4

6

8

11

14

17

19

21

23

25

27

f

p

pp

f

f

Solo

Tutti

Solo

Tutti

Solo

Public Domain

29

31

34

37

39

41

43

45

47

49

51

54

56

p *pp* *f*

Tutti

Fine

(Solo)

58

60

62

64

66

68

70

73

76

79

81

83

85

Tutti

Solo

Detailed description of the musical score: The score is written for a single melodic line in treble clef. The key signature has three sharps (F#, C#, G#), and the time signature is 3/4. The music begins at measure 58 with a steady eighth-note pattern. Measures 58-69 are marked with a common time signature. At measure 70, the tempo changes to 'Tutti' and the rhythm becomes more complex with sixteenth notes and rests. At measure 73, the tempo changes to 'Solo' and the music returns to a steady eighth-note pattern. The score ends at measure 85.

87

89

91

93

96

99

102

104

107

109

111

113

115

87

89

91

93

96

99

102

104

107

109

111

113

115

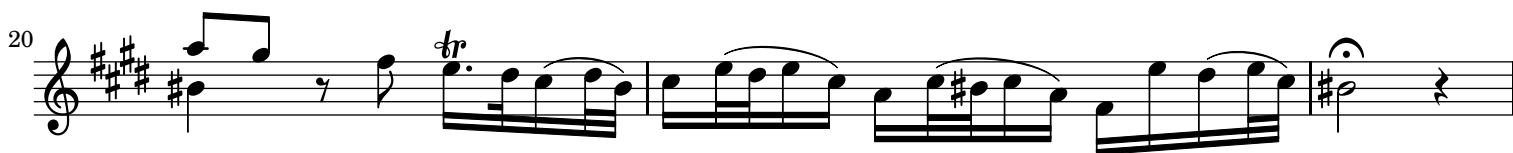
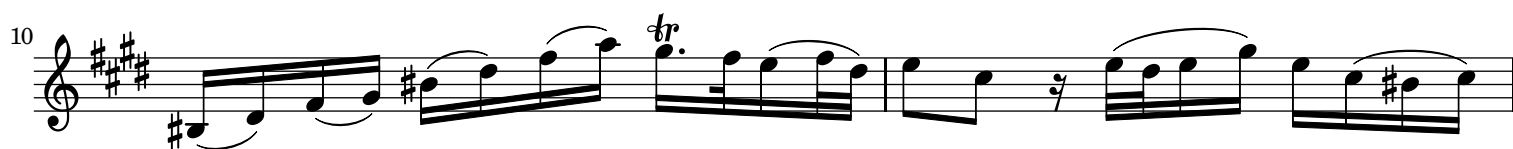
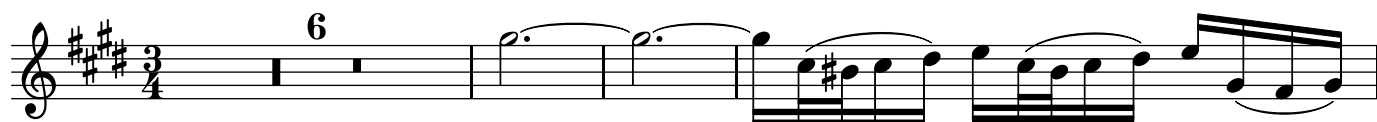


Adagio



D.C. al fine

Adagio



30

32

35

37

39

41

43

45

47

49

6

Allegro Assai

7

14

Solo

21

27

33

Tutti

39

45

Solo

51

57

p

63

f *p* Tutti

70

76

Solo

83

89

95 *Tutti*

102

108 *tr*

115

120 *p f p f*

125 *p f p f*

130

135

141 *Tutti*

146

153 *tr*