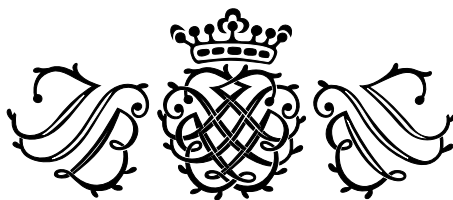


Die Freude Reget Sich

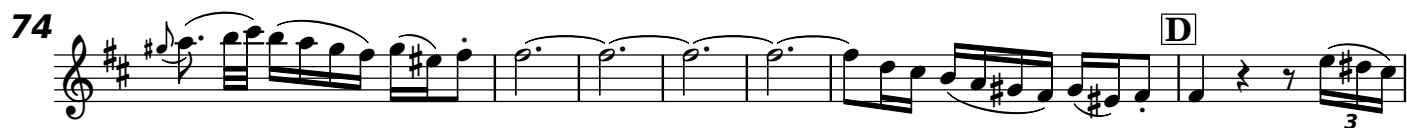
BWV 36b

Flauto traverso



Johann Sebastian Bach

1. CHOR.



2. RECITATIV.

TENORE, CONTINUO

3. ARIE.

TENORE, OBOE D'AMORE, CONTINUO

4. RECITATIV.

ALTO, ARCHI, CONTINUO

5. ARIE.

Measures 1-19 of the Arie. The score is written in treble clef with a key signature of two sharps (F# and C#) and a common time signature (C). The melody features various rhythmic patterns, including eighth and sixteenth notes, and rests. Trills (tr) are marked above measures 4, 7, 10, and 19. Slurs are used to group eighth and sixteenth notes. Triplet markings (3) are present in measures 4, 7, 10, 14, 17, and 19. The dynamic marking *piano* appears at the end of measure 7, and *forte* appears at the end of measure 19.

4



6. RECITATIV.

SOPRANO, CONTINUO

7. ARIE.

5

9

13

17

24

31

43

46

piano

forte

6
55

59

63

67

piano

71

75

80

forte

85

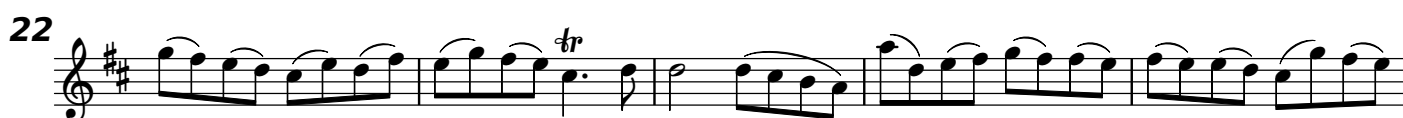
piano

90

94

98

Da Capo.

8. CHOR.

8

