

Symphony No. 3 in E \flat Major

Eroica

Oboe I

Ludwig van Beethoven (1770-1827)

Op. 55


Allegro con brio (♩. = 60)

26 

37

49

sf *ff* *p cresc. >*

61 

73 

[illegible]

97 

116 

[illegible]

139 *cresc.* *ff* *f* 3

152 1. 4 2 2 7 2 *pp* *p dolce* *p dolce*

176 2 2 *sf* *p* *cresc. p* *cresc.*

190 **F** *ff* *ff* 4

204 *p* *cresc.* 4

218 *f* *ff* **G** *sfp* *sfp* 2

231 5 7 2 **H** *sfp* *sf* *ff*

253 *sf sf sf sf sf sf ff sf sf sf sf sf sf ff*

266 *sf sf sf sf sf sf ff sf sf sf sf sf sf sf sf sf*

278 *sf sf sf f f f f f* **I** 4 *sfp* *sfp*

292 *sfp* *cresc.* *p* 7 *f*

308 *sf* *sf*

316 *sf* *sf* *sf* *ff* **K**

327 17 *p*

354 *cresc.* *sf* *sf*

366 **L** *ff* *f* *f* *f* *f* *p*

378 *decresc.* *pp* *pp* *pp* 2 2 6

400 *f* *ff* **M** 23 *cresc. decresc.* *pp* 3 *cresc.* *f*

436 *sf* *sf* *più f* *ff* *sf* *sf*

447 *sf* *sf* **N** *p* 2 3

462 *ff* *p* *p* **O** 3 *f*

475

484 *cresc.* *ff* **P** *p* *cresc.*

500 *sf* *p* *cresc.* *f sf sf sf* **Q**

519 *sf ff sf sf sf*

530 *ff sf sf sf sf sf sf* **R** 4

543 *p cresc. ff f f*

553 *f f p ff p* **S** 5

573 *pp p* 3

586 *sf sf sf cresc. p sf*

597 *sf pp cresc. decresc.* **T** 9 11

627 *p cresc. p p* **U** 2

639 642

653 660

661 671

672 684

685 692

Marcia funebre

Adagio assai (♩ = 80)

7 12

13 19

38 44

45 52

53 59

63 **Maggiore**

74 **[C]**

82 **[3]**

87 **[3]**

95 **[3]**

102 **Minore** **[5]** **[D]**

131 **[2]**

140 **[3]**

145 **[E]**

151 **[4]** **[F]**

174 **[3]**

cresc. *ff* *sf* *sf* *sf* *sf* *p*

cresc. *p* *cresc.*

f *sempre più f* *ff* *sf* *sf* *sf* *sf*

f *ff*

sf *sf*

cresc. decresc. *p*

181 *p* *cresc.* *sf* *p*

192 *cresc.* *p* *cresc.* *f* *p*

199 *p* *f* *sf* *p*

208 *cresc.* *f* *pp* *p*

226 *cresc.* *p cresc.* *p* *espress.*

234 *pp* *sf* *p*

Scherzo

Allegro vivace (♩ = 116)

6 *pp*

15 *pp* *pp*

27 *sempre pp*

60 *p* *p*

87 **A** *cresc. ff*

97 *sf sf sf*

108 *p* 3

121 **B** *f sf sf p p*

132 *p p*

143 7 2 *cresc. ff*

161 1. 2. **Trio 6** *f f f f f f*

177 6 16 2 *p p f*

210 *sempre legato p dolce*


220 14 21 3 9 *p pp f p*

276 3 *p*

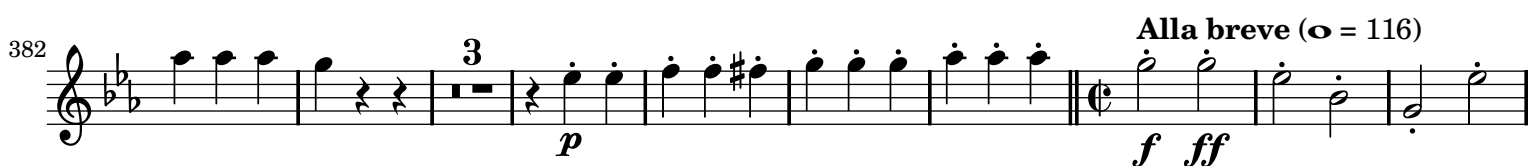
289 

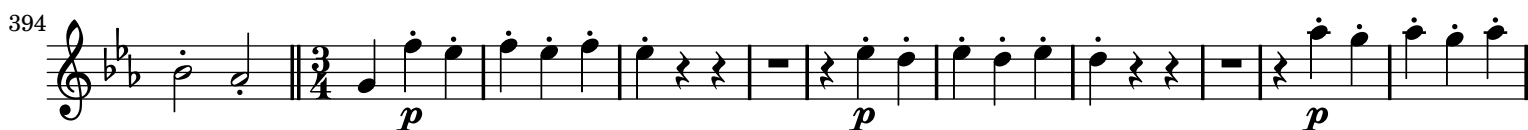
322 
sempre pp *p*

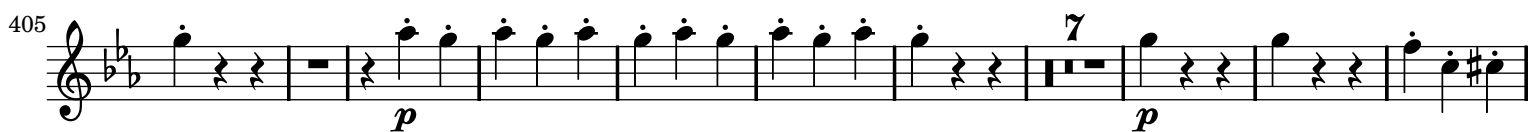
351 
cresc.

361 
ff *sf* *sf*

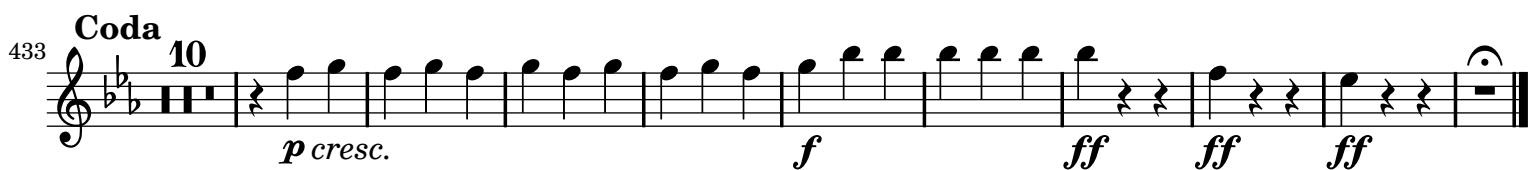
371 
sf *sf*

382 
p *f* *ff*

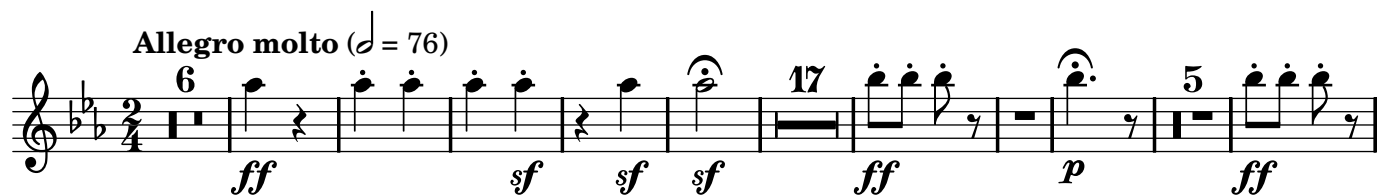
394 
p *p* *p*

405 
p *p*

422 
cresc. *ff* *f* *f*

Coda 433 
p cresc. *f* *ff* *ff* *ff*

Finale

Allegro molto (♩ = 76) 
ff *sf* *sf* *sf* *ff* *p* *ff*

38
p

70
dolce *cresc.* *sf* *decresc.*

85
f *sf* *p*

94
f *p* *sf*

103
f *cresc.* *sf*

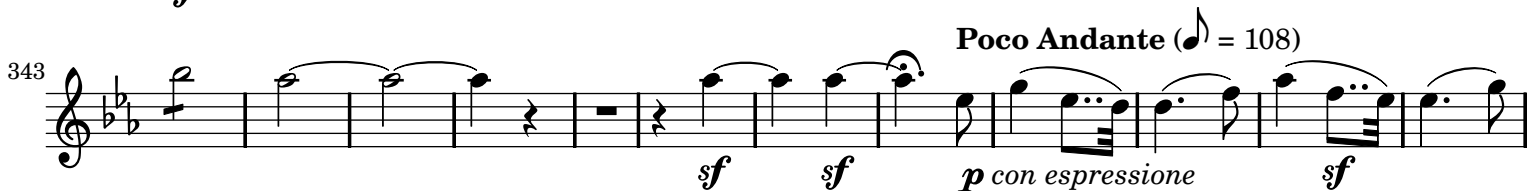
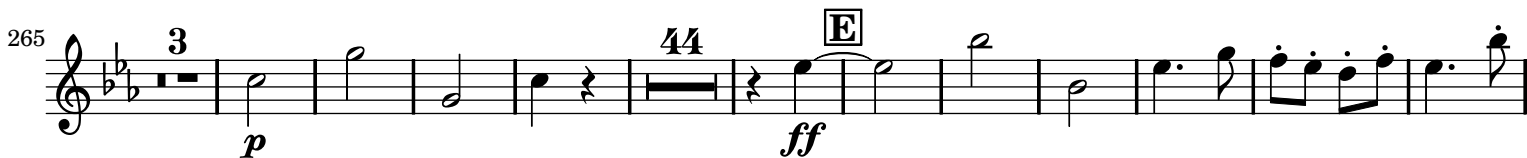
116
ff *cresc.* *f*

154
sf *sf* *f* *ff*

174
p

189
cresc. *sf* *sf*

205
ff *sempre f*



374 *cresc.*

381 *p* *ff sf sf sf sf sf*

389 *sf sf sf sf*

397 *p cresc. p cresc.*

406 *p cresc. f sempre più f ff*

433 *Presto* (♩ = 116) *ff sf sf*

443 *sf sf sf sf sf sf sf sf sf sf sf*

451 *sf sf sf sf sf*

458 *sf sf sempre più f ff*

467