

Symphony No. 3 in E \flat Major

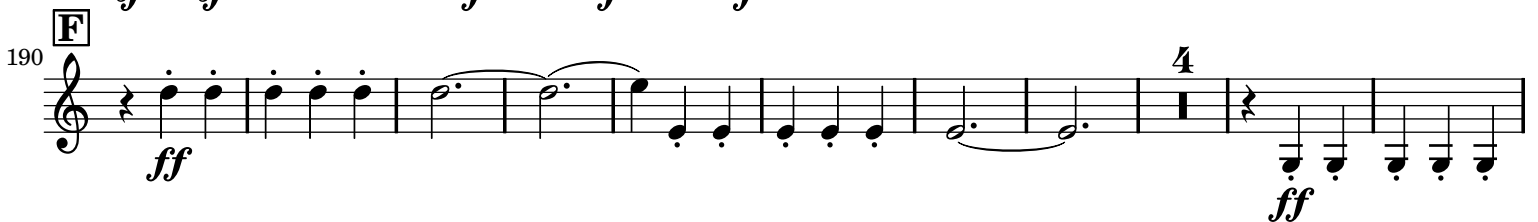
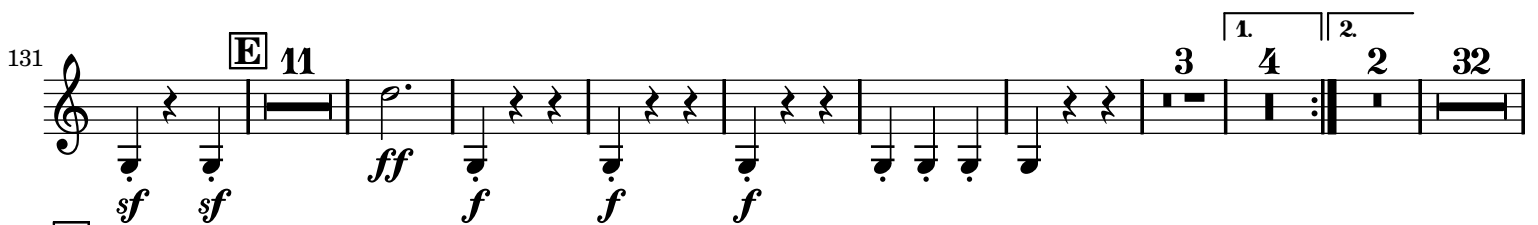
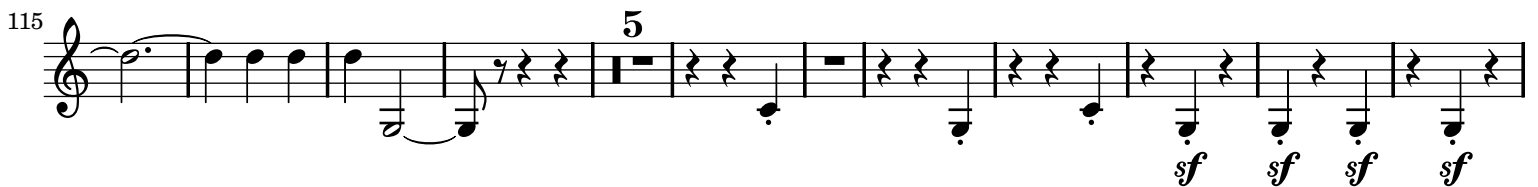
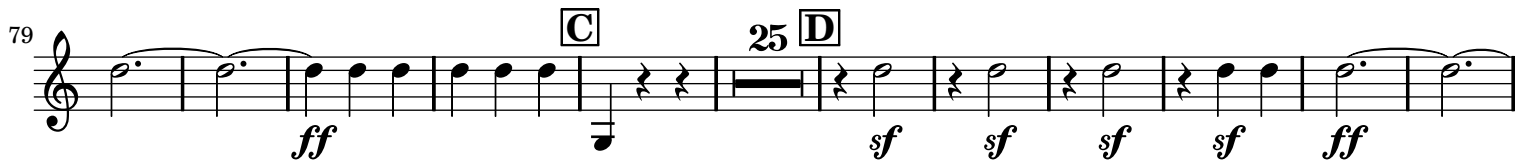
Eroica

Trumpet II

Ludwig van Beethoven (1770-1827)

Op. 55

Allegro con brio ($\text{♩} = 60$)



266

sf sf sf sf sf sf sf sf sf sf sf sf sf sf sf sf sf sf sf

278

sf sf sf f f f f f f f sf sf

I 24

313

sf f sf ff

K 39 **L** 29 **M** 29

326

ff f sf più f

432

cresc. f sf più f

444

ff sf sf sf sf ff

N 9

463

p f

O 7 3

482

cresc. ff sf sf sf sf

P 25 **Q**

520

ff sf sf ff

4

535 **R** 10

sf sf sf sf sf sf *cresc. ff f f f*

555 **S** 5 2 31 **T** 32

f ff p pp cresc.

634 **U** 14 **V** 3 3 3 3 3 3

p cresc.

657 3 3 *f*

669 **W** 7

sf sf sf ff p f

686 *f f f ff*

Marcia funebre

A **B**

Adagio assai (♩ = 80) **Maggiore**

16 34 18 7 **C** 11

ff sf sf sf sf

91 *p cresc. f sempre più f*

98 **Minore** **D** **3** **24**

133 **6** **2**

149 **E** **9** **ff** **sf** **sf** **ff**

167 **4** **F** **18** **G** **14** **H** **38** **p**

Scherzo

A **Allegro vivace** (♩. = 116) **30** **62** **ff**

101

113 **7** **B** **23** **sf** **sf** **sf** **p**

152 **2** **cresc.** **ff**

163 **1.** **2.** **Trio** **32** **55** **f** **f** **f**

259 1. 2. 6 95 C

ff

371

382 7 **Alla breve** (♩ = 116) 23

ff *p*

420 2

cresc. *ff*

431 **Coda** 12

f *f* *cresc.* *ff* *ff* *ff*

Finale

Allegro molto (♩ = 76) 6 17 5

ff *sf* *sf* *ff* *p* *ff*

38 1. 2. 5 6 2 3 3 7 3

p

74 3 8 3

f *sf*

98 4 A 7

f *f* *ff*

466

