

# OCTET

E-flat Major

Cello I

F. Mendelssohn-Bartholdy, Op. 20

**Allegro moderato ma con fuoco**

1 *p* *cresc.* - - *f* *fp* *cresc.* - - - -

8 *- f* *sf* *sf* *sf* *sf*

15 *sf* *p* *cresc.* - - *cresc. f* *ff* *p* **A**

23 *cresc. - f* *dim. - p* **B**

29 *cresc. - - - - f* *p* *cresc. f*

38 *sf* *sf* *fp* *cresc.* - - - - *f* *p* **C**

46 *dim.* - - - - - *pp* *cresc.* *p* *cresc.*

54 *- - - - - f* *cresc.* - - - - - *ff* *ffp*

62 *sf pp* *p* *pizz.*

72 **D** 5

86 *arco* **E** *tr* *tr* *pizz.* *arco* *cresc.*

95 *ff* *ff* *ff* *sempre ff* **F** *f*

108 *cresc.* *ff* *f* **G**

115 *f*

122 *ff* 1.

129 *fp* 2. *f*

136 *f* *f* *f*

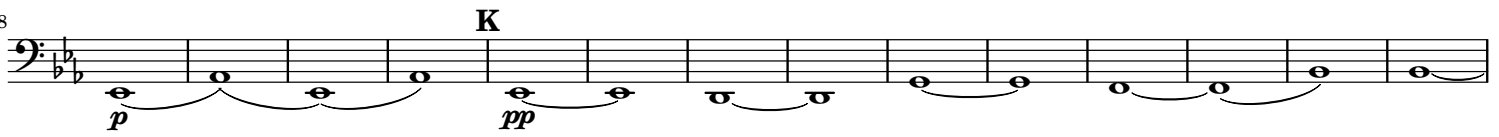
142 **H** *ff*

148

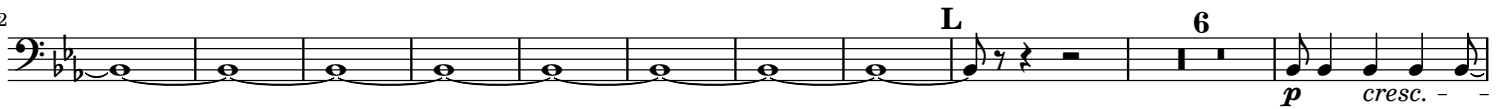
154 *f* *dim.* *mf* *dim.* *p* **J**

162 *dim.* *pp* 9

178



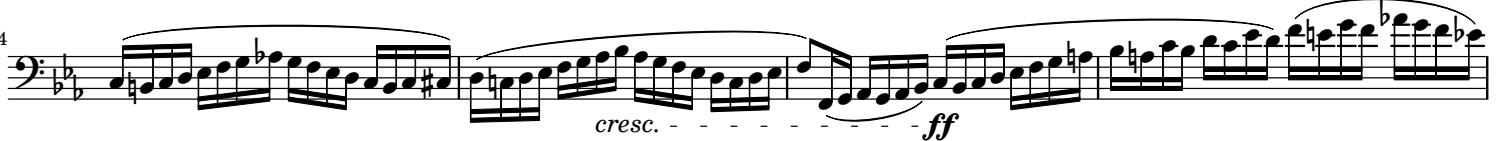
192



208



214



218



222



230



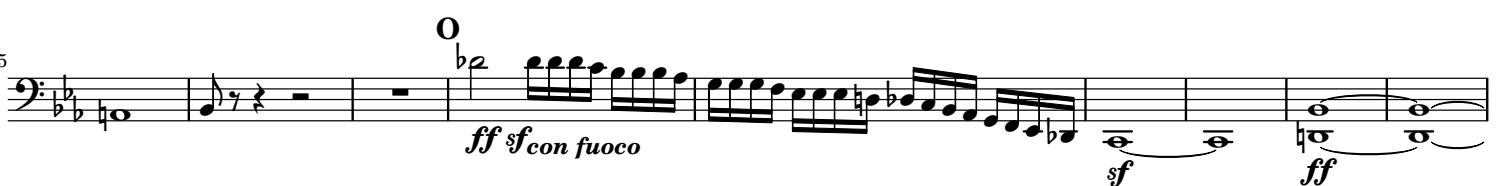
240



250



255



264



273



280 *ff* *pp* *Q*

286

295 *p* *cresc.* *f* *3* *R*

305 *ff* *cresc.* *sf sf*

315 *sf sf* *ff* *fp* *cresc.* *f* *ff*

## Andante

*p* *6* *A 2* *pp*

17 *cresc.* *f* *pizz.* *dim.* *arco* *pp* *B*

25 *dim.* *ff* *C* *3* *3* *pp*

30 *sempre pp*

33

36 *cresc.* *f* *ff* *dim.* *p* *dim.* *pp*

41 *D*

54 **E** *cresc.*

60 *cresc.* *cresc.* *f*

66 **F** *pizz.* *p* *arco*

72 **G** *pp*

83 **H** *espress.*

92 **3**

### Allegro leggerissimo

*pizz.* *pp* *arco*

9 *pizz.*

17 **A** *arco* *pizz.* *arco*

26 **B**

37 **C**

46 **D** *2* *p*

56 **4** *pp*

67 **1.** *pizz.* **2.** **3**

76 **E**

87

96 **F** *stacc.* *tr*

107 **G** *p*

117

130 **H** *dim.* *pp*

141 *pizz.* *arco*

151 **J** *tr*

159

172 **K**

182 **L**

190

198 **M**

206 **2**

214 *N* *sfp* *sf* *sf* *3* *O*

227 *pp*

233

239 *dim.* - - - - -

### Presto

4 *f*

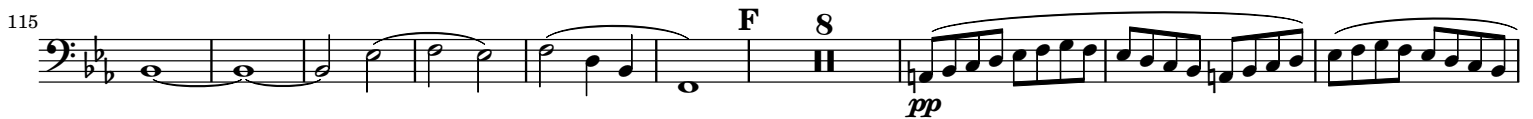
12

23 *A* *ff*

35

46 *B* *fp* *cresc.*

58 *C* *mf* *cresc.* *f* *p* *5*



189 **K** 4 *f*

201 **L** *ff*

212 7 *f* **M**

229 4 *sf sf ff* **N**

245 *sf sf sf sf sf sf sf sf* **O**

260 *f*

270 **P** *pizz.* *pp*

281 7 **Q** *arco ff*

298 *ff* *sempre piu f*

308 *ff*

318 **R** *ff*

326 *sf* **S**

340

351 **T** *f* *sf*

363 *sf* **U** *sf*

## Cello I

11

376

Measures 376-390 of the Cello I part. The key signature has two flats (B-flat and E-flat). Measure 376 starts with a whole rest, followed by a half note B-flat, a half note G-flat, and a whole note F. Measures 377-380 feature a series of half notes: B-flat, G-flat, F, and E-flat. Measure 381 has a half note D, a half note C, and a whole note B-flat. Measure 382 has a half note A, a half note G, and a whole note F. Measure 383 has a half note E-flat, a half note D, and a whole note C. Measure 384 has a half note B-flat, a half note A, and a whole note G. Measure 385 has a half note F, a half note E, and a whole note D. Measure 386 has a half note C, a half note B, and a whole note A. Measure 387 has a half note G, a half note F, and a whole note G. Measure 388 has a half note A, a half note B, and a whole note A. Measure 389 has a half note B, a half note C, and a whole note B. Measure 390 has a half note C, a half note B, and a whole note A. The dynamic markings are *sf* (measures 377-380), *sf* (measures 381-384), *sf* (measures 385-388), and *p* (measures 389-390). The section ends with a double bar line.

407

Measures 407-420 of the Cello I part. The key signature has two flats (B-flat and E-flat). Measure 407 starts with a half note B-flat, a half note G-flat, and a whole note F. Measures 408-410 feature a series of half notes: B-flat, G-flat, F, and E-flat. Measure 411 has a half note D, a half note C, and a whole note B-flat. Measure 412 has a half note A, a half note G, and a whole note F. Measure 413 has a half note E-flat, a half note D, and a whole note C. Measure 414 has a half note B-flat, a half note A, and a whole note G. Measure 415 has a half note F, a half note E, and a whole note D. Measure 416 has a half note C, a half note B, and a whole note A. Measure 417 has a half note G, a half note F, and a whole note G. Measure 418 has a half note A, a half note B, and a whole note A. Measure 419 has a half note B, a half note C, and a whole note B. Measure 420 has a half note C, a half note B, and a whole note A. The dynamic markings are *p* (measures 407-410), *cresc.* (measures 411-414), *mf* (measures 415-418), *cresc.* (measures 419-420), and *ff* (measures 421-424). The section ends with a double bar line.

421

Measures 421-435 of the Cello I part. The key signature has two flats (B-flat and E-flat). Measure 421 starts with a half note B-flat, a half note G-flat, and a whole note F. Measures 422-424 feature a series of half notes: B-flat, G-flat, F, and E-flat. Measure 425 has a half note D, a half note C, and a whole note B-flat. Measure 426 has a half note A, a half note G, and a whole note F. Measure 427 has a half note E-flat, a half note D, and a whole note C. Measure 428 has a half note B-flat, a half note A, and a whole note G. Measure 429 has a half note F, a half note E, and a whole note D. Measure 430 has a half note C, a half note B, and a whole note A. Measure 431 has a half note G, a half note F, and a whole note G. Measure 432 has a half note A, a half note B, and a whole note A. Measure 433 has a half note B, a half note C, and a whole note B. Measure 434 has a half note C, a half note B, and a whole note A. Measure 435 has a half note B, a half note A, and a whole note G. The section ends with a double bar line.