

Violin Concerto in D Major

I. Allegro Moderato

Contrabasso

P. Tschaikowsky. 1840-1893

Op. 35

Allegro moderato.

10

p

cresc.

mf

f

ff

19

f

mf

p

28

pizz.

pp

arco

34

5

pizz.

p

arco

45

pp

51

cresc.

56

f

f

61

ff

dim.

66

2

pizz.

pp

75

arco

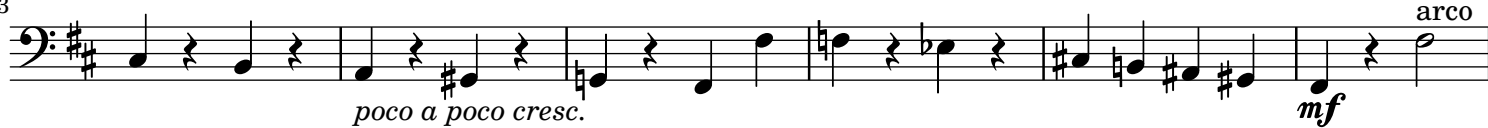
pp

poco cresc.

pizz.

p

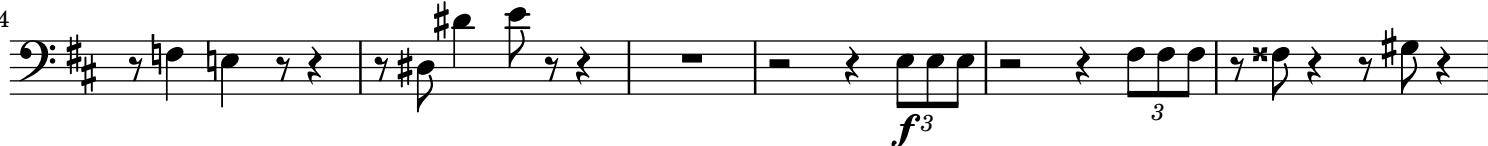
83



89



94



100



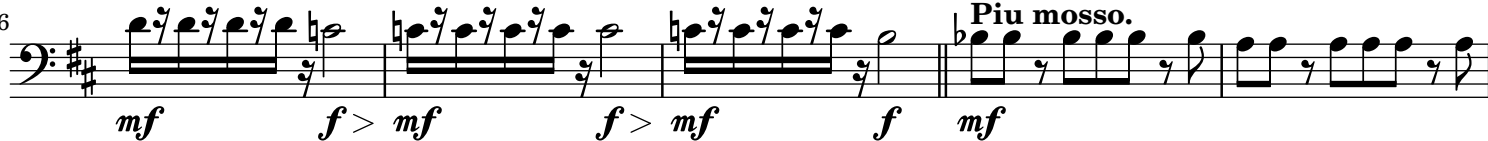
105



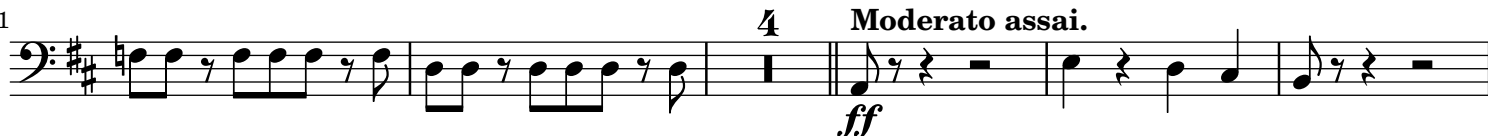
112



116



121



130



136



142



146



150



155 *cresc.*

159 *ff* *f* *pp* *pizz.*

165 *p* *pp*

171

177 *arco*

185 *ff* *2*

193 *ff*

199 *ff*

206

212 *pp* *pizz.* *arco* *pp* *poco cresc.*

264 *pp* *pizz.* *cresc.* *3*

273 *arco* *mf dim.* *2*

281 *cresc.*

287 pizz. *f* *cresc.* arco *ff*

293 2 pizz. *pp* *p*

301 arco *pp* *p cresc.* *pp*

309 *cresc.* *mf*

316 *f* *f³* *3*

322 *pp* *mf*

328 3 *pp* *poco a poco cresc.*

335 *f* *mf* *f* *mf* *f*

339 *> mf* *f >* *f* *mf*

344 4 Allegro gusto. *f* *cresc.* *f*

353

358 *f* *Stringendo.* *p* *cresc.*

363



Piu mosso.

369



374



379



Violin Concerto in D Major

II. Canzonetta

Contrabasso

P. Tschaikowsky. 1840-1893

Op. 35

36 *pp* *p* *rit.* 3 *pp*

47 *piu f* *pp* *p* *piu f* *p*

67 *pizz.* *p*

77 *pp* *arco*

86 *mf* *p cresc.* 22 *rallent.* 4 *riten. molto* *pp* *Attacca subito*

Violin Concerto in D Major

III. Finale

Contrabasso

P. Tschaikowsky. 1840-1893

Op. 35

Allegro vivacissimo.

12 *ff* *f* *ff* *p* *pizz.* *arco* *p*

56 *f* *dim.* *p* *cresc.*

66 *mf* *dim.* *p* *mf* *dim.* *p*

76 *mf* *dim.* *p* *mf* *cresc.*

88 *mf* *p* *pizz.*

103 *f* *mf* *arco* *f* *p*

113 *f* *p* *f* *mf* *pizz.*

123 *f*

134 *p* *ff* *Poco meno mosso.* *arco* *18*

164 **Tempo I.** *mf*

Molto meno mosso.

189



212

Poco a poco rallentando



224

Poco a poco string.

Quasi andante.

Tempo I.



244

pizz.



254

arco



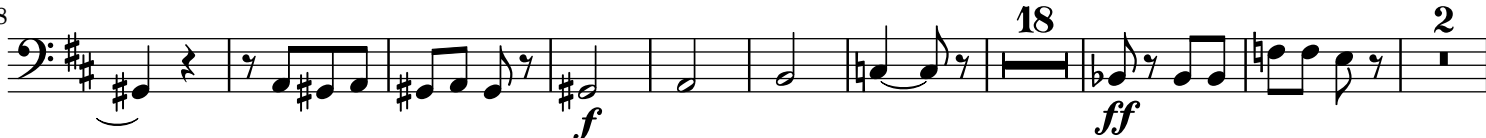
265



277



288



317



329



338



349

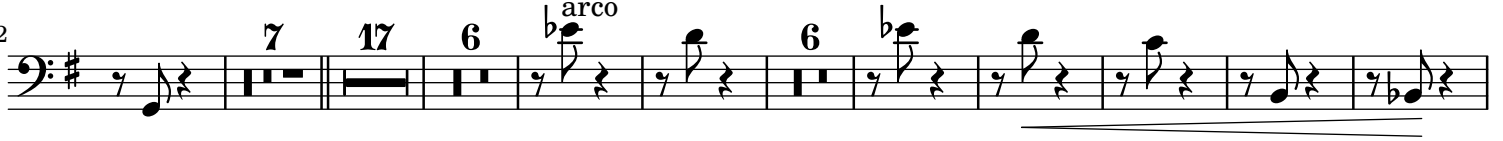
Poco meno mosso. Tempo I.



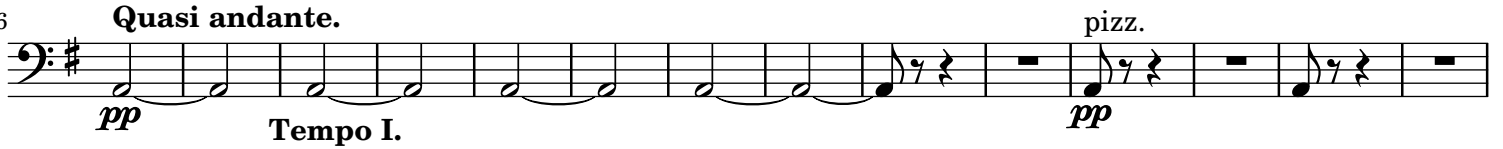
383



392



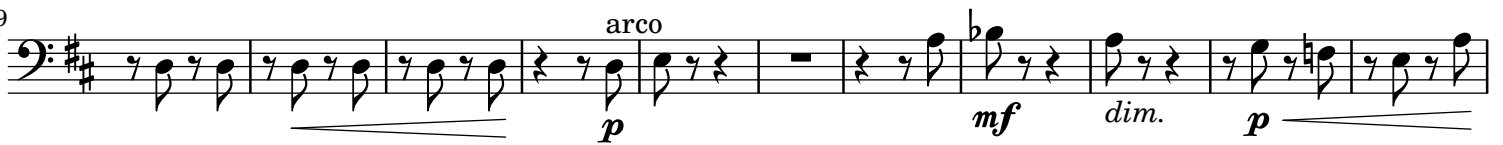
436



450



469



480



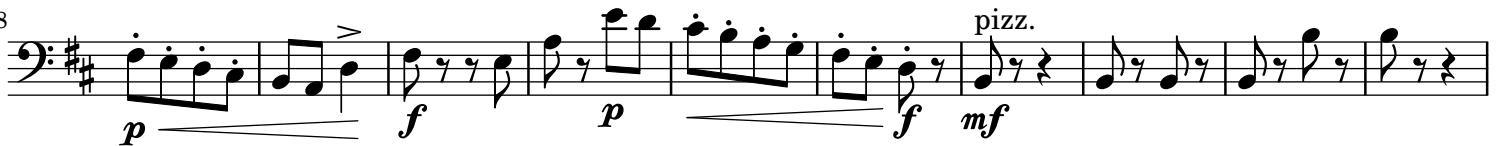
491



504



518



528



539



553



2

2

2

2

5

2 2 2 2

The bass line is written on a single staff with a key signature of one sharp (F#) and a common time signature (C). It consists of 12 measures. The notes are: G2 (quarter), A2 (quarter), B2 (quarter), C3 (quarter), D3 (quarter), E3 (quarter), F#3 (quarter), G3 (quarter), A3 (quarter), B3 (quarter), C4 (quarter), D4 (quarter). The first measure is a whole note, and the remaining measures are half notes. The first measure is marked with a '5' above it, and the other measures are marked with a '2' above them.

2

[illegible]

p cresc.

J

Example 6-8

f

The bass line of 'The Rose Tree' is written on a single staff in bass clef with a key signature of one sharp (F#). The melody consists of eighth and sixteenth notes, often beamed together. It includes a dynamic marking of *f* (forte) and various articulation marks such as slurs and accents.

J

The bass line of 'The Rose Tree' is written in G major (one sharp) and 2/4 time. It consists of ten measures. The notes are: G2 (quarter), A2 (quarter), G2 (quarter), F#2 (quarter), G2 (quarter), A2 (quarter), G2 (quarter), F#2 (quarter), G2 (quarter), and A2 (quarter). The first two measures are beamed together, as are the last two. There are accents over the third and seventh measures. The piece ends with a forte (f) dynamic marking.

ff

The image displays a musical score for the song "The Rose Tree". It consists of two staves, both in bass clef and key of D major (two sharps). The top staff begins with a treble clef and a common time signature, which are then crossed out, indicating the music is to be played in bass clef and common time. The melody is written in eighth and sixteenth notes, with some triplets. The bottom staff provides a harmonic accompaniment, primarily using quarter and eighth notes. A dynamic marking of *ff* (fortissimo) is placed below the first measure of the bottom staff. The piece concludes with a double bar line and repeat dots.