

Violin Concerto in D Major

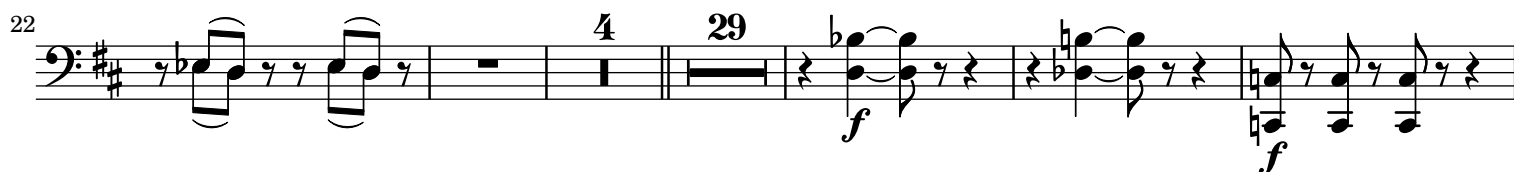
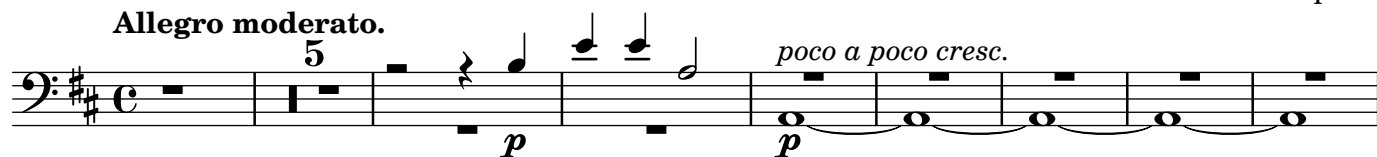
I. Allegro Moderato

Fagotti

P. Tschaikowsky. 1840-1893

Op. 35

Allegro moderato.



Moderato assai.

124 *ff* 3

129 3

134 *ff* 3

138 *p* <

143 *mf* *p* < *f*

148 *f* *mf* 3

156 *cresc.* *p* *ff* *mf*

161 *f* *mf* > 6 *p* 6 *p*

178 *p* *cresc.*

185 *ff*

192 *ff*

198

204

ff

210

pp *cresc.*

274

mf *ff*

290

cresc. *ff*

304

p *cresc.* *pp*

311

p *p* *f*³

321

pp

331

f

337

f *f* *f* *f*

343

mf *cresc.*

Allegro gusto. 2

2

348 **Allegro gusto. 2**

f

f

Stringendo.

356 

363

3

[illegible]

Piu mosso.

370 *ff*

374

374

379

This block contains measures 379 through 382 of the musical score. Measure 379 is a bass line in D major, starting with a half note D2, followed by eighth notes E2, F#2, G2, A2, B2, C3, and D3. Measures 380 and 381 are piano accompaniment. Measure 380 features a series of eighth-note chords: D2-F#2, E2-G2, F#2-A2, G2-B2, A2-C3, B2-D3, C3-E3, and D3-F#3. Measure 381 continues with a similar pattern of eighth-note chords: D2-F#2, E2-G2, F#2-A2, G2-B2, A2-C3, B2-D3, C3-E3, and D3-F#3. Measure 382 is a whole note D2 for the voice, with a piano accompaniment of a half note D2 and a half note F#2.

Violin Concerto in D Major

II. Canzonetta

Fagotti

P. Tschaikowsky. 1840-1893

Op. 35

9 *p* *pp* *mf* *p* *pp* 25 rit. 13

53 *mf* *dim.* 18

77 16 *p* *pp*

101 *mf* *cresc.*

111 *rallent.* *riten. molto* *pp*

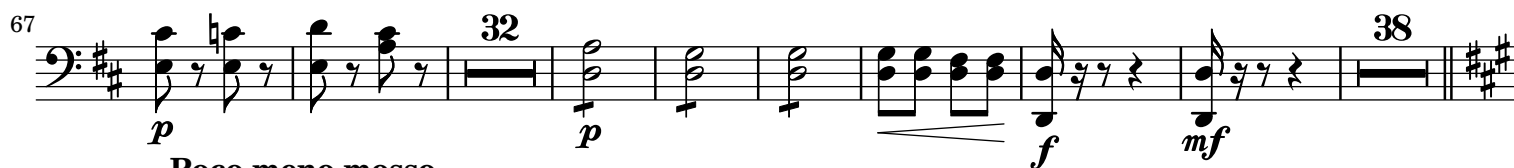
Violin Concerto in D Major

III. Finale

Fagotti

P. Tschaikowsky. 1840-1893
Op. 35

Allegro vivacissimo.



Poco meno mosso.



Tempo I.



Molto meno mosso.

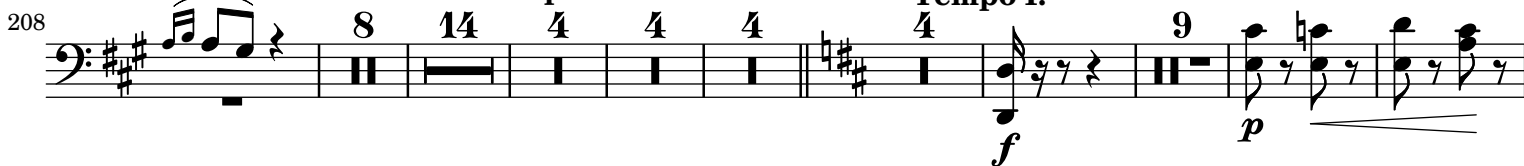


Poco a poco string.

Quasi andante.

Poco a poco rallentando

Tempo I.



Poco meno mosso.

334 15 3 *p* *ff* Molto meno mosso.

Tempo I.

361 7 25 *pp* 9

Quasi andante.

Poco a poco rallentando

412 19 4 *p*

Tempo I.

Poco a poco stringendo.

443 10 4 9 *pp* *f* *p*

475 32 26 *p* *f* *mf* *p* poco a poco cresc.

542 *cresc.* *f*

557 2 *ff*

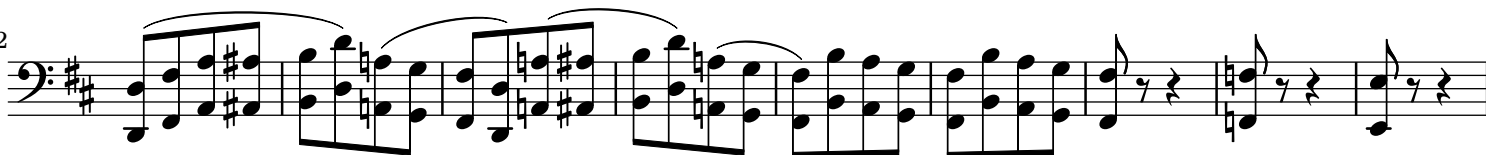
569 2 2 2 2

584

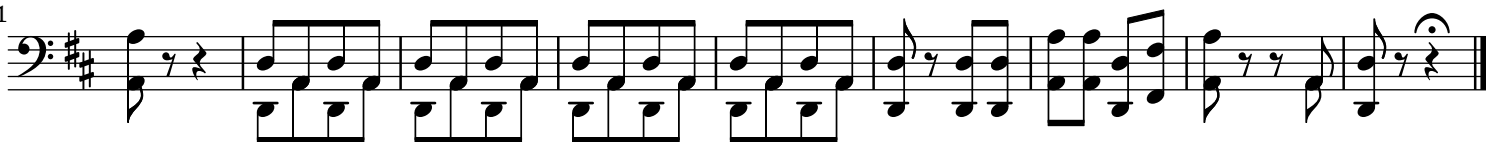
595 3 *f* *f*

607 3 3 *f*

622



631

*ff*