

L'estro Armonico, Op. 3

Concerto IV

Viola I

Antonio Vivaldi
550

Andante

Measures 1-44 of the Andante section. The key signature is one sharp (F#) and the time signature is 3/4. The music features a mix of eighth and sixteenth notes, often beamed together. Dynamics include *p* (piano) and *f* (forte). Measure numbers 9, 23, 33, and 44 are indicated at the start of their respective staves.

Allegro assai

550

Measures 45-98 of the Allegro assai section. The key signature is one sharp (F#) and the time signature is 3/4. The music is more rhythmic, featuring many eighth and sixteenth notes. Dynamics include *p* (piano) and *f* (forte). Measure numbers 11, 20, 29, 42, 57, and 69 are indicated at the start of their respective staves.

79

90

102

113

124

133

p

f

p

f

550

Adagio

550

Allegro

12

25

40

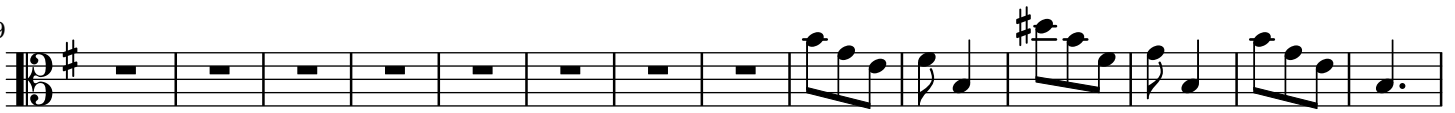
53

66

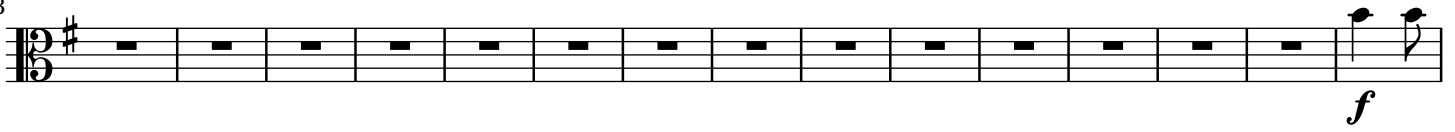
f

p

79



93



108



120

