

# L'estro Armonico, Op. 3

## Concerto VI

### Violin IV

Antonio Vivaldi  
519

**Allegro**

5

10

16

23

30

37

42

48

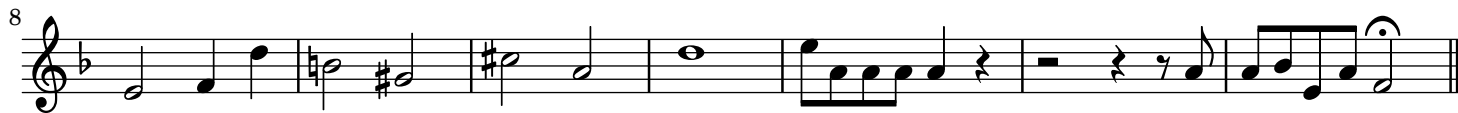
56

63

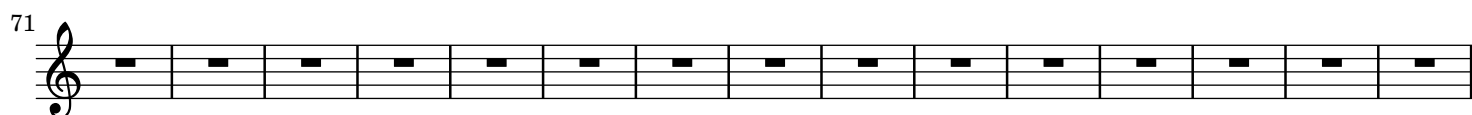
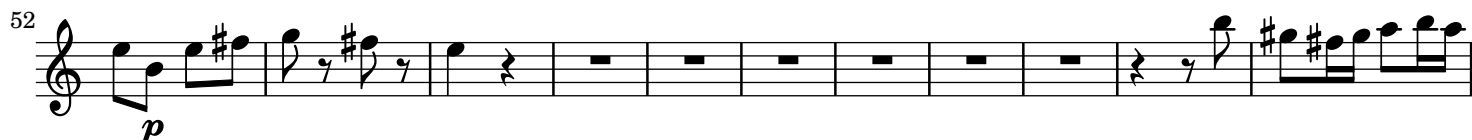
70

**Largo**

519

**Presto**

519



## Violin IV

3

105

115

126

135

Detailed description: This image shows four staves of musical notation for Violin IV. The first staff (measures 105-114) begins with a treble clef and a key signature of one sharp (F#). It contains eighth and sixteenth notes, followed by a whole note rest. The second staff (measures 115-125) continues the melodic line with similar rhythmic patterns and a whole note rest. The third staff (measures 126-134) features more complex rhythmic figures, including triplets and sixteenth notes, ending with a whole note rest. The fourth staff (measures 135-144) concludes the passage with a final melodic phrase and a double bar line.